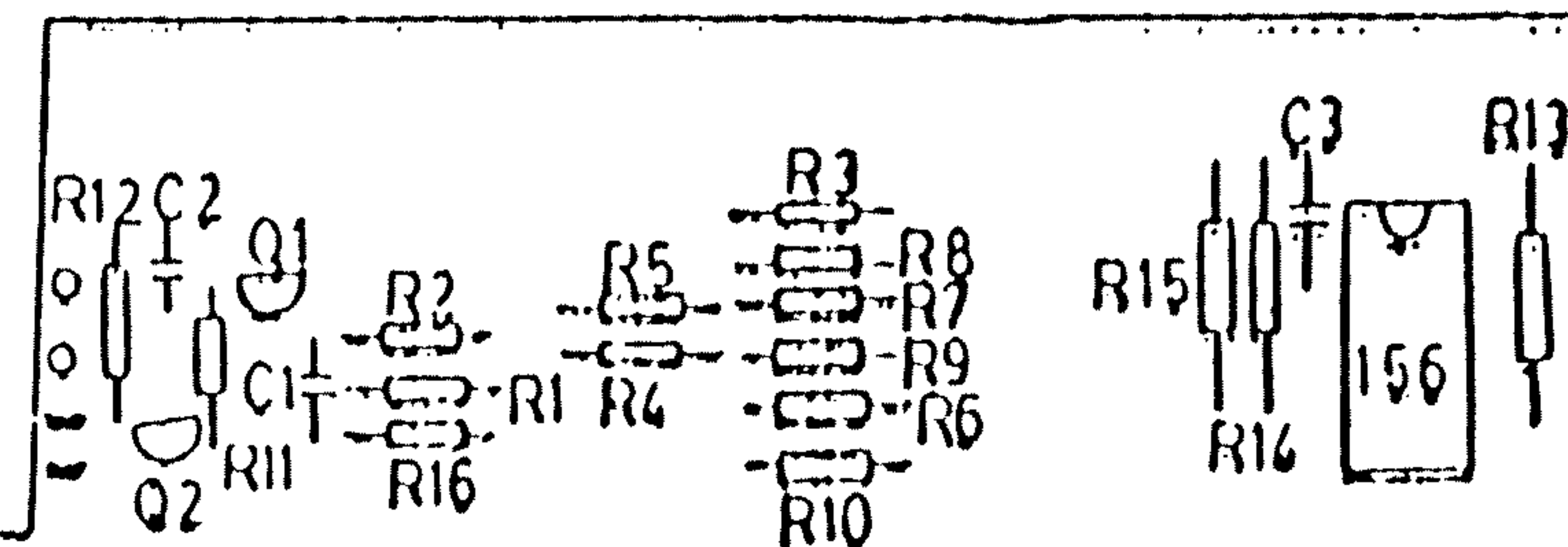


Anlage C:

Schaltplan GENIE III
(C) by EACA

CONFIDENTIAL PROPRIETARY DATA

These drawings and/or specifications, and the data contained therein are the exclusive property of EACA Computer Ltd. issued in strict confidence and shall not without the prior written permission of EACA Computer Ltd. be shown or disclosed in any manner to any other person, or be copied, reproduced or used for any purpose whatsoever except in the maintenance and repair of equipment manufactured by EACA Computer Ltd.



COMPONENT SIDE

KEY BOARD COMPONENT LAYOUT

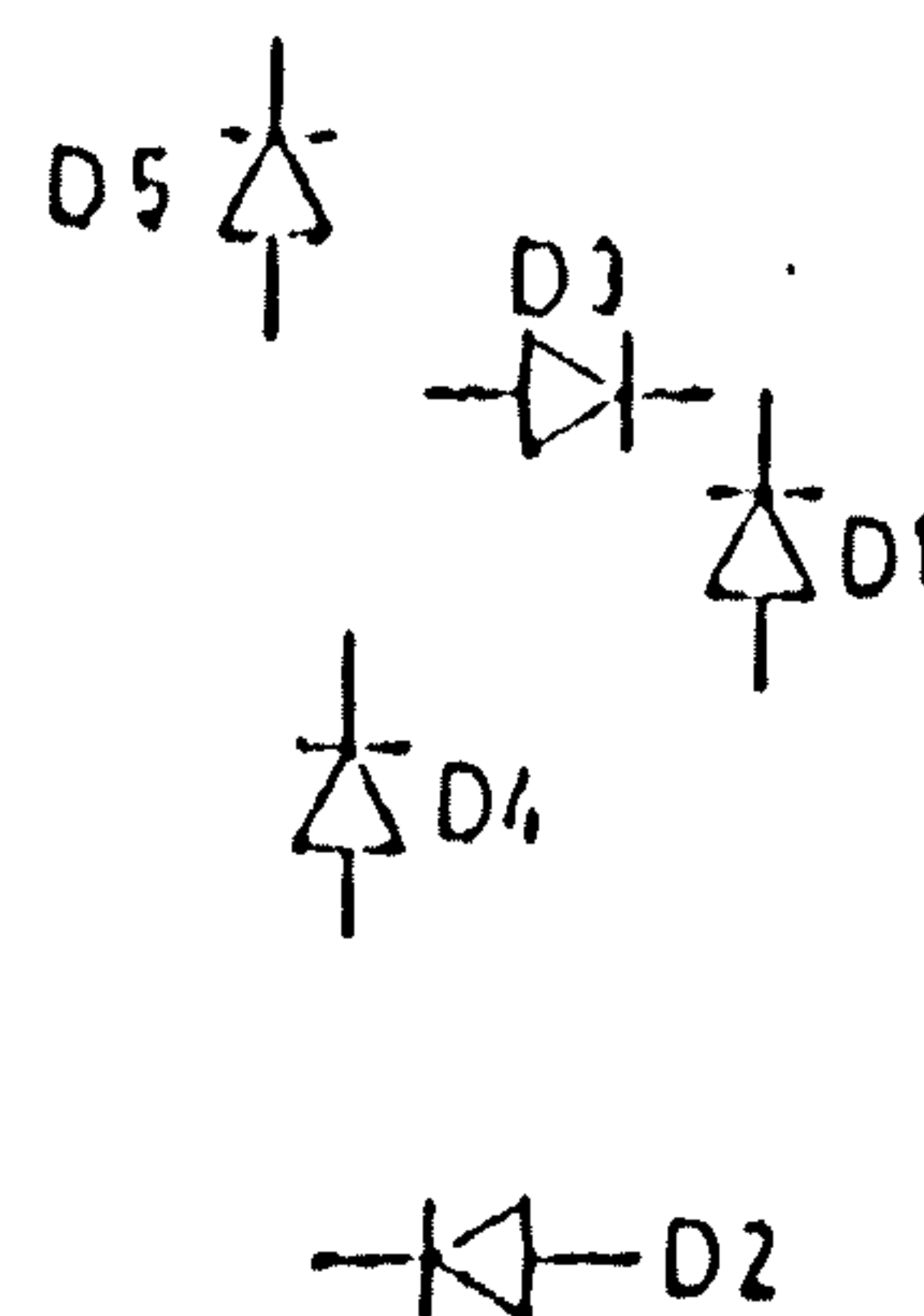
PAGE 1 OF 3

CONFIDENTIAL PROPRIETARY DATA

These drawings and/or specifications, and the data contained therein are the exclusive property of EACA Computer Ltd. Issued in strict confidence and shall not without the prior written permission of EACA Computer Ltd. be shown or disclosed in any manner to any other person, or be copied, reproduced or used for any purpose whatsoever except in the maintenance and repair of equipment manufactured by EACA Computer Ltd.

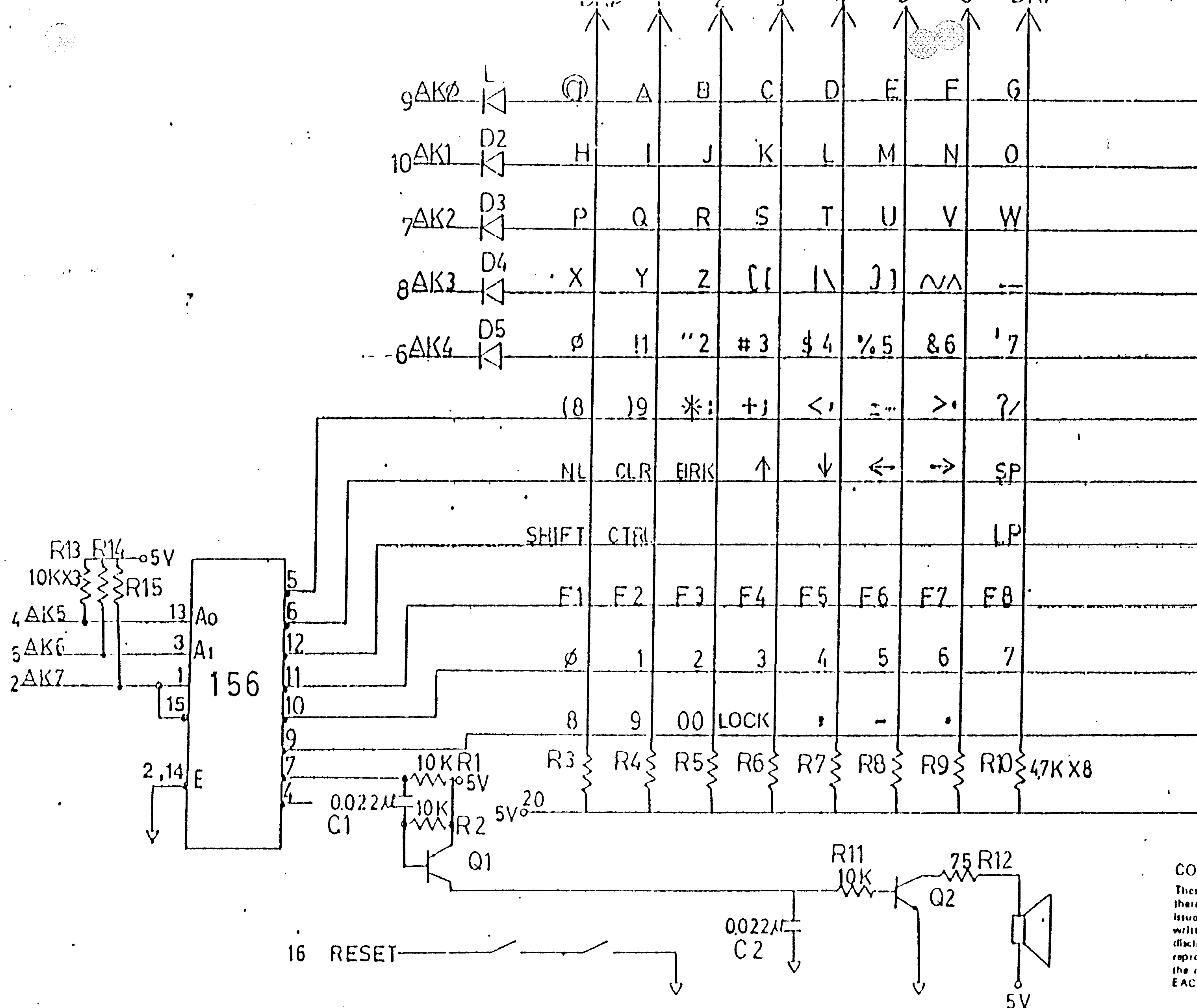
20 PIN HEADER
CONNECTOR

DIN SOCKET



SOLDERING SIDE

KEY BOARD COMPONENT LAYOUT
PAGE 2 OF 3



CONFIDENTIAL PROPRIETARY DATA
 These drawings and/or specifications, and the data contained therein are the exclusive property of EACA Computer Ltd. Issued in strict confidence and shall not without the prior written permission of EACA Computer Ltd. be shown or disclosed in any manner to any other person, or be copied, reproduced or used for any purpose whatsoever except in the maintenance and repair of equipment manufactured by EACA Computer Ltd.

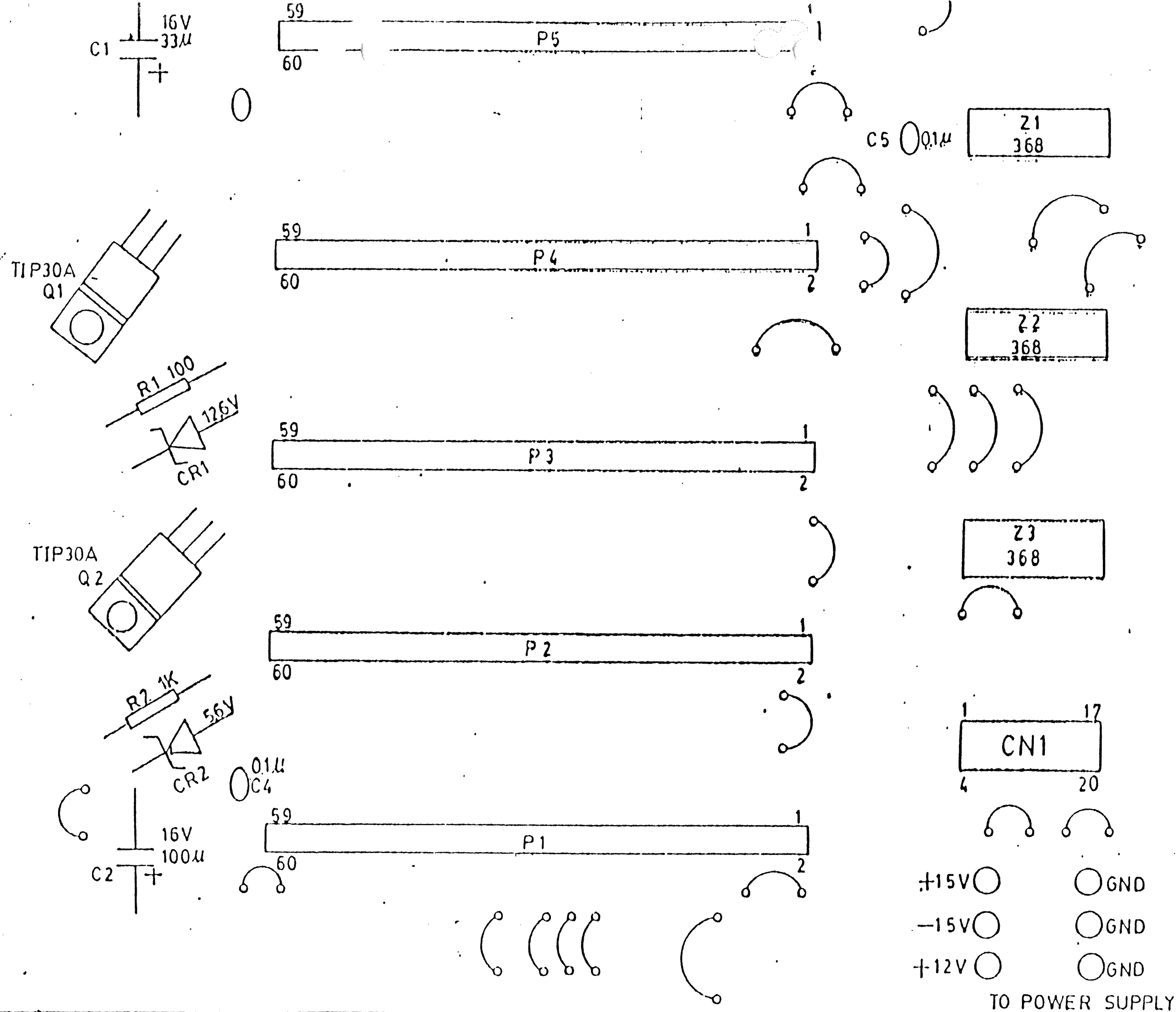
18 LIGHTPEN

GENIE III KEYBOARD

PAGE 3 OF 3

CONFIDENTIAL PROPRIETARY DATA

These drawings and/or specifications, and the data contained therein are the exclusive property of EACA Computer Ltd. issued in strict confidence and shall not without the prior written permission of EACA Computer Ltd. be shown or disclosed in any manner to any other person, or be copied, reproduced or used for any purpose whatsoever except in the maintenance and repair of equipment manufactured by EACA Computer Ltd.

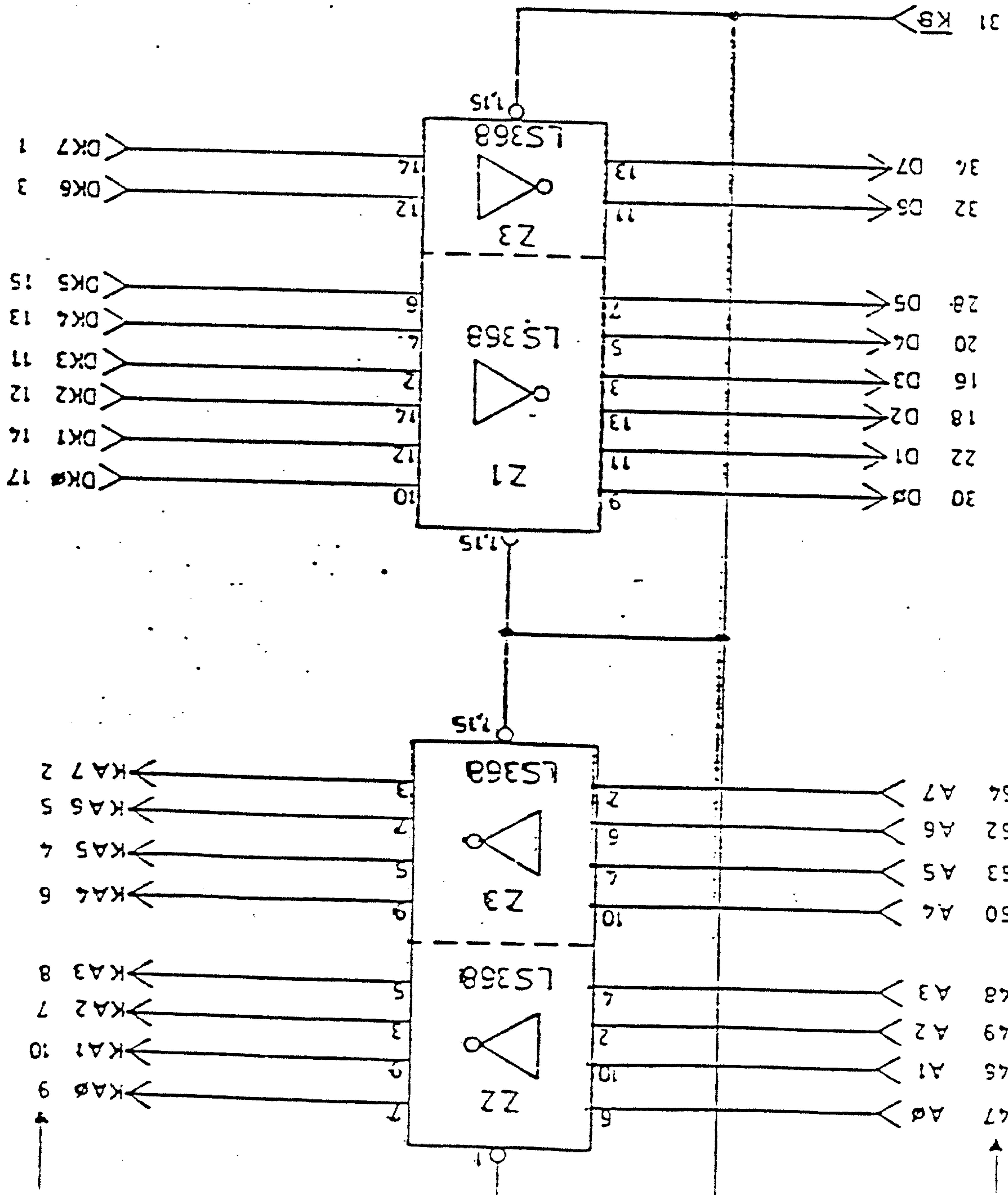
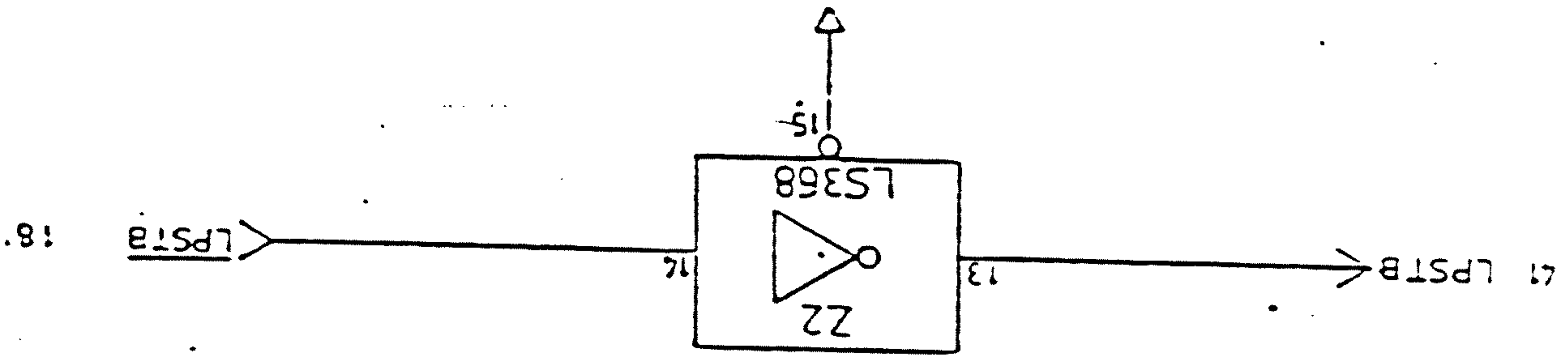
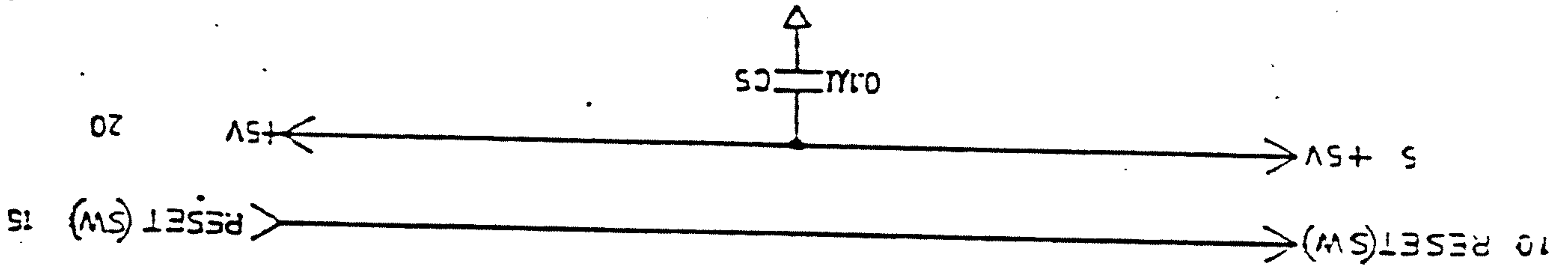
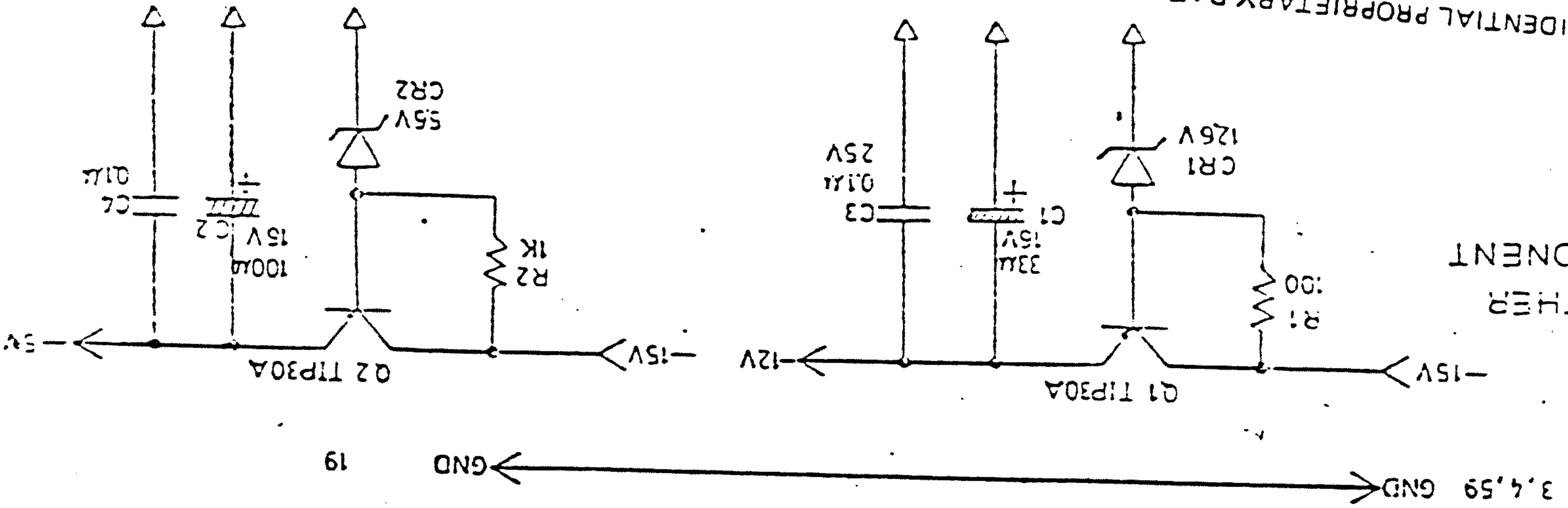


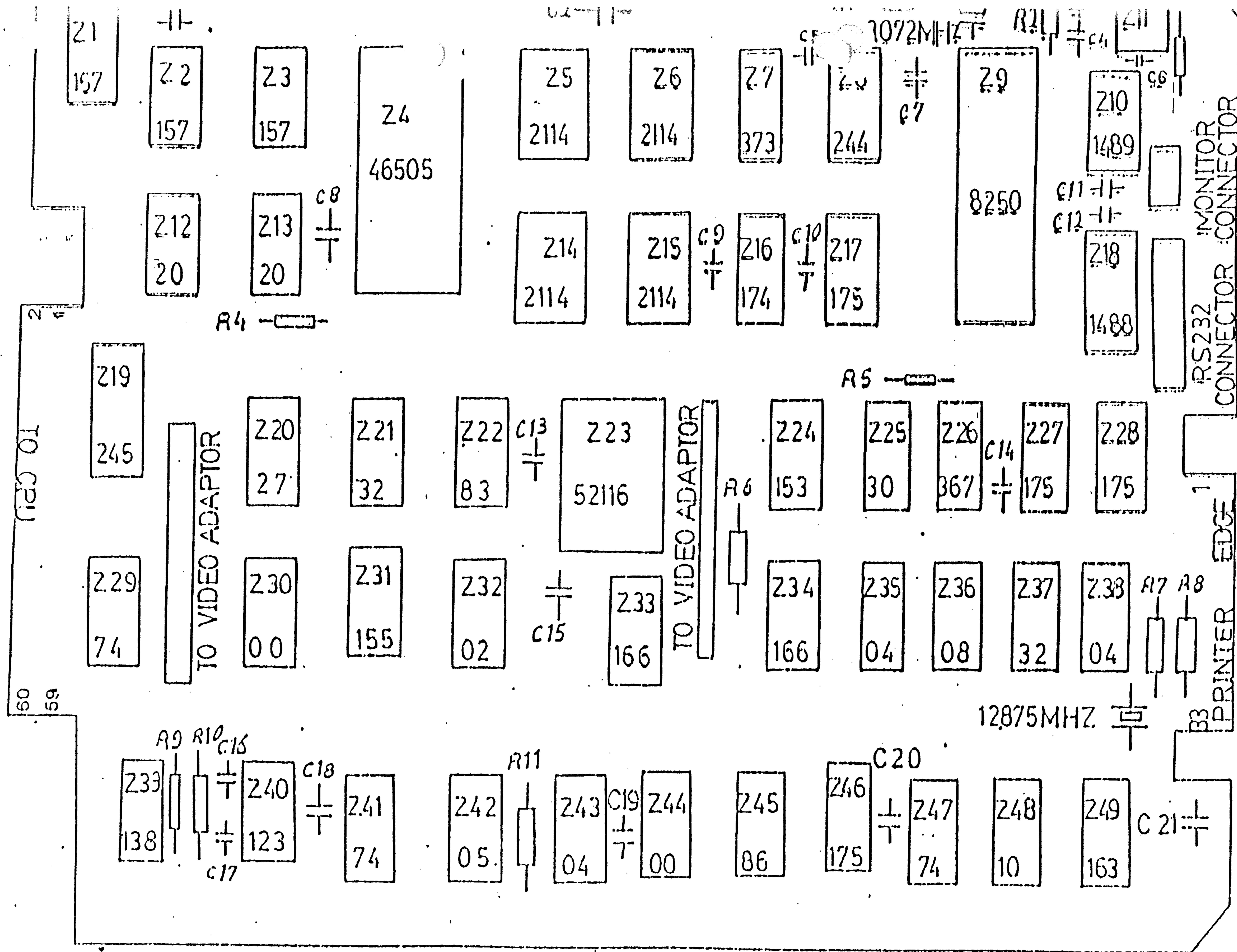
GENIE III MOTHER BOARD
COMPONENT LAYOUT

CONNECTOR 20 PIN TO KEYBOARD

ENGINE III MOTHER
BOARD COMPONENT
LAYOUT

These drawings and/or locations, and the data contained
herein are the exclusive property of EACA Computer Ltd.
written permission of EACA Computer Ltd.
discovery in any form.



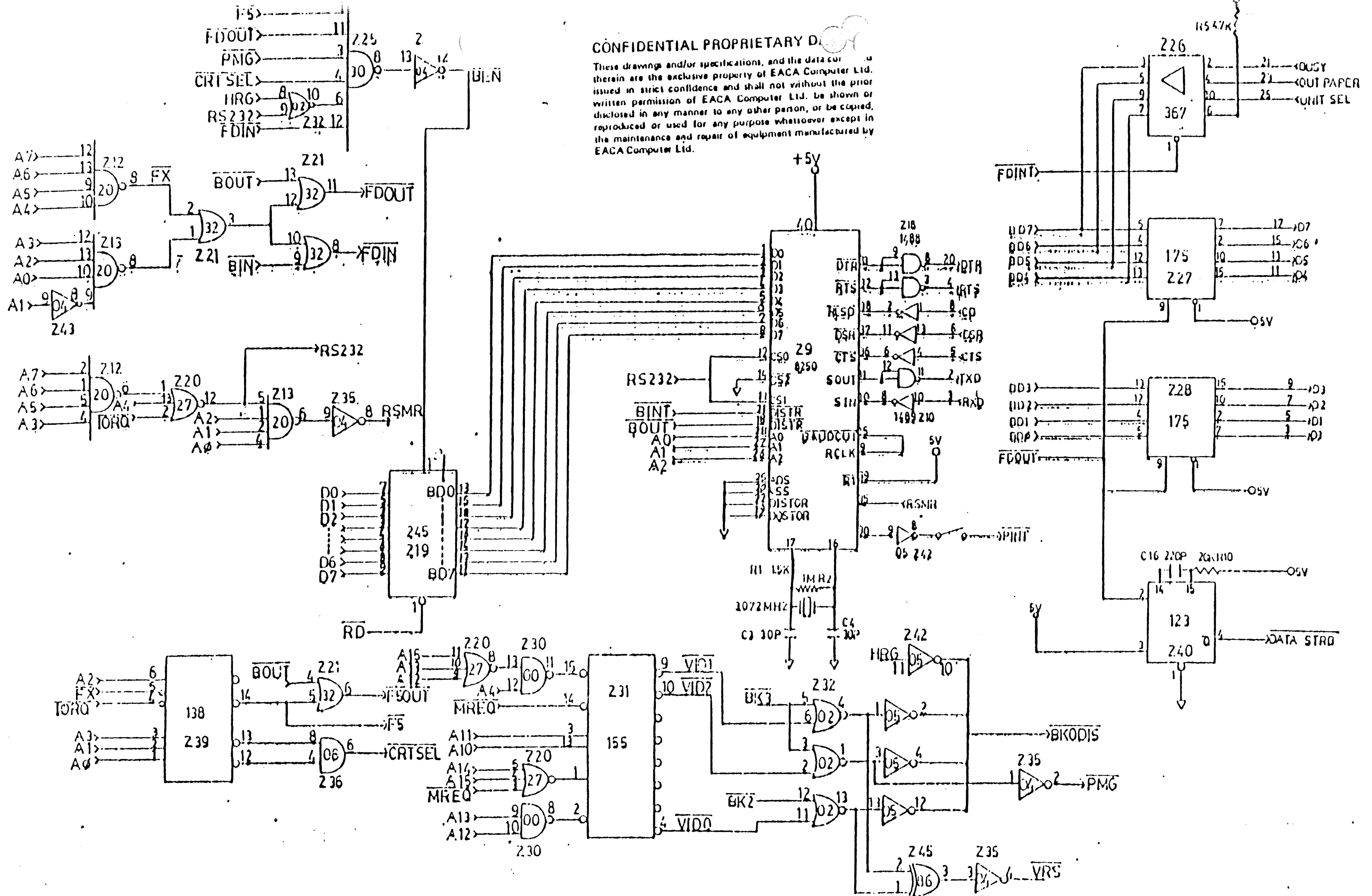


GENIE III

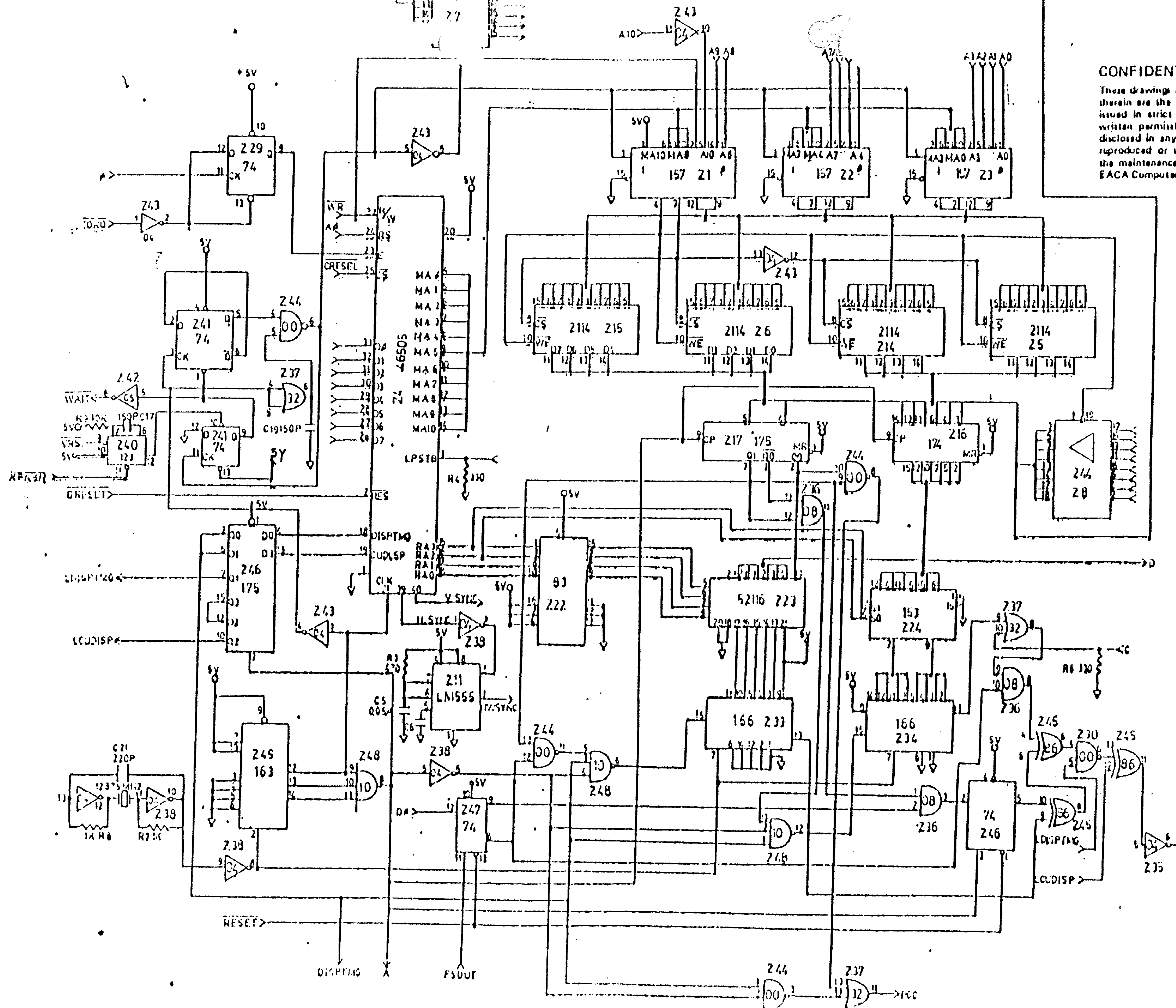
INTERFACE 1

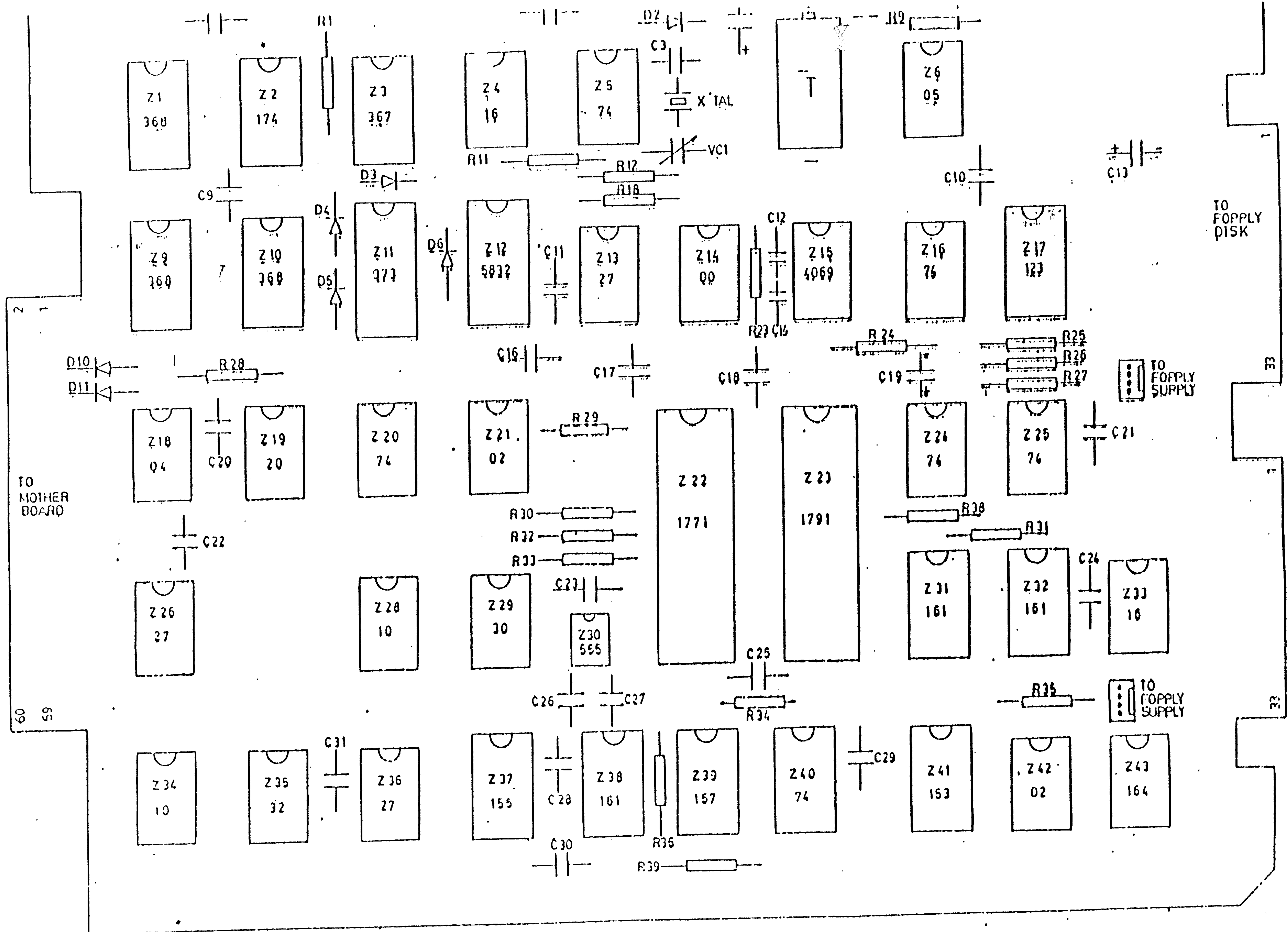
CONFIDENTIAL PROPRIETARY DOCUMENT

These drawings and/or specifications, and the data contained therein are the exclusive property of EACA Computer Ltd. issued in strict confidence and shall not without the prior written permission of EACA Computer Ltd. be shown or disclosed in any manner to any other person, or be copied, reproduced or used for any purpose whatsoever except in the maintenance and repair of equipment manufactured by EACA Computer Ltd.



These drawings and/or specifications, and the data contained therein are the exclusive property of EACA Computer Ltd. issued in strict confidence and shall not without the prior written permission of EACA Computer Ltd. be shown or disclosed in any manner to any other person, or be copied, reproduced or used for any purpose whatsoever except for the maintenance and repair of equipment manufactured by EACA Computer Ltd.

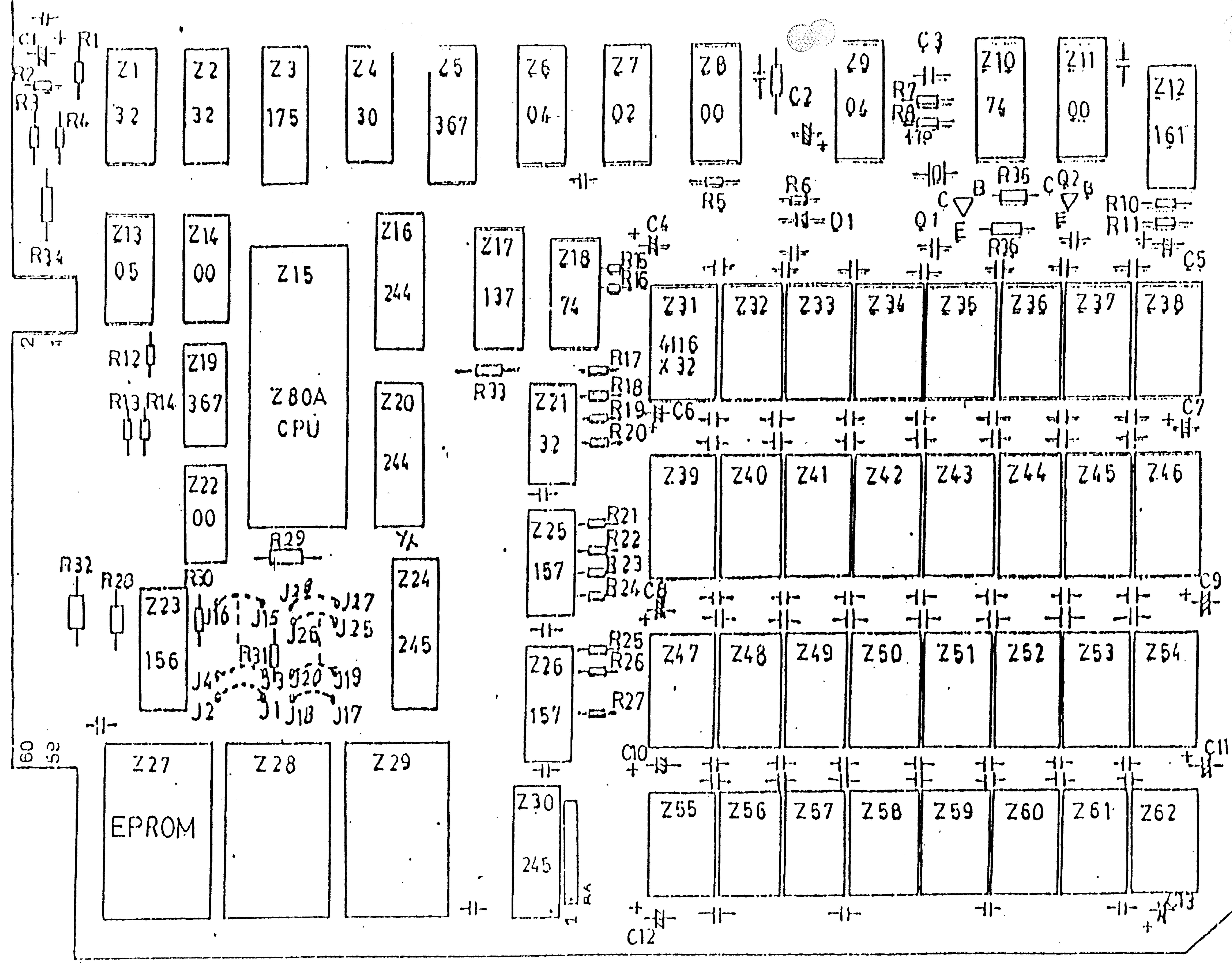




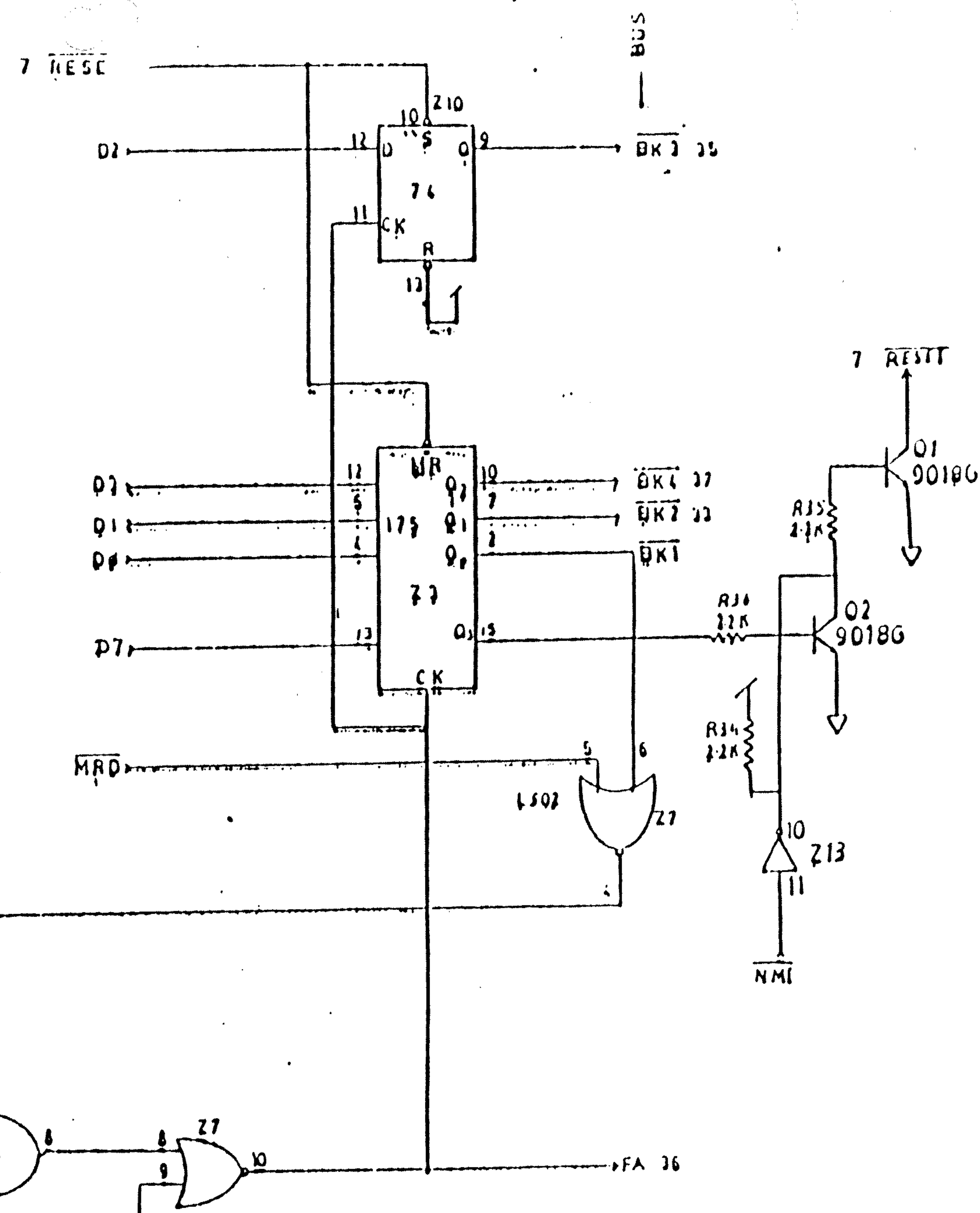
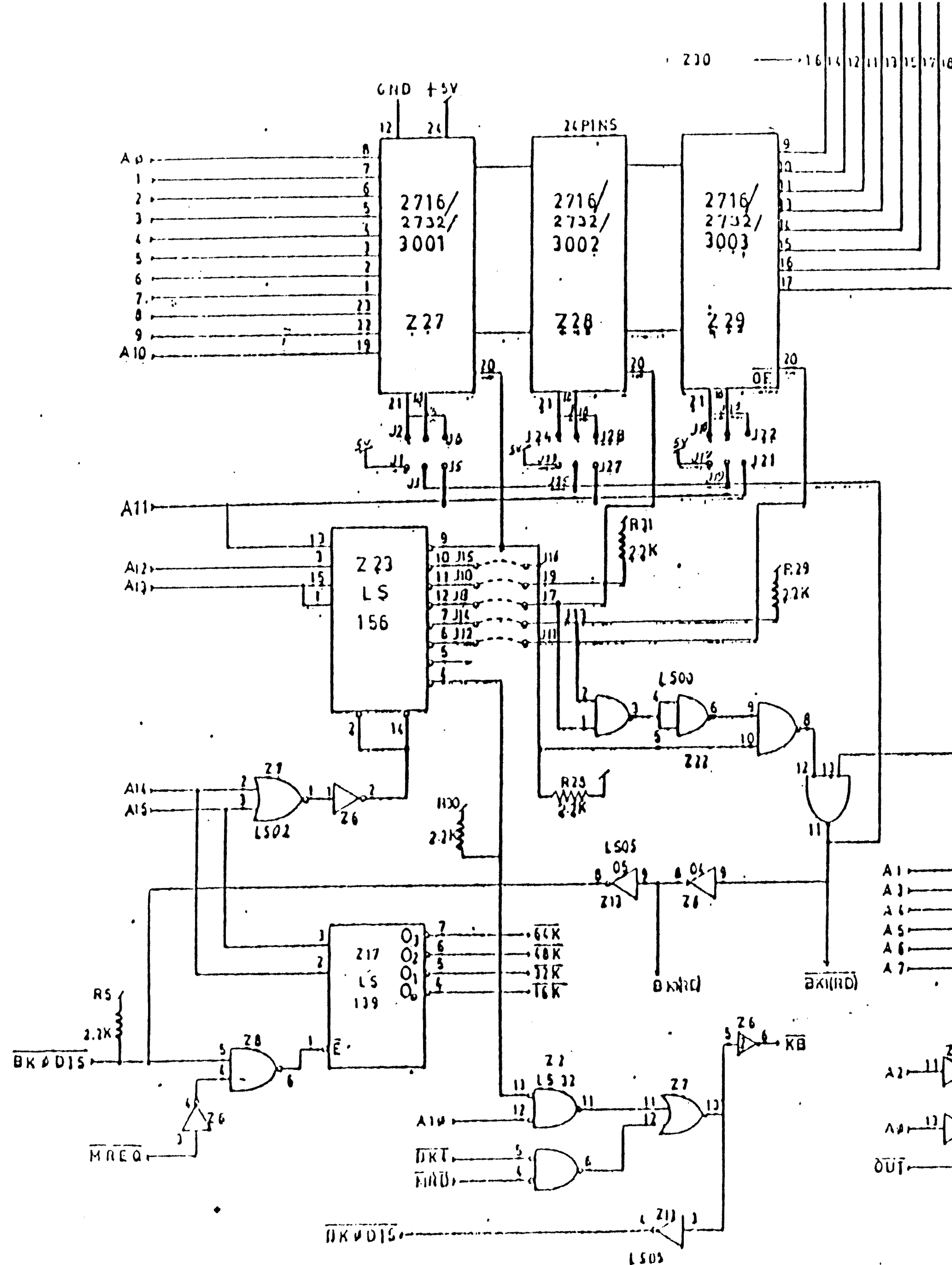
GENIE III INTERFACE BOARD

Handwritten signature/initials

CONFIDENTIAL PROPRIETARY DATA
 These drawings and/or specifications, and the data contained therein are the exclusive property of EACA Computer Ltd. and shall not be disclosed or used in any manner without the prior written permission of EACA Computer Ltd. or be copied, reproduced or in any manner to any other person, or be used in any manner.



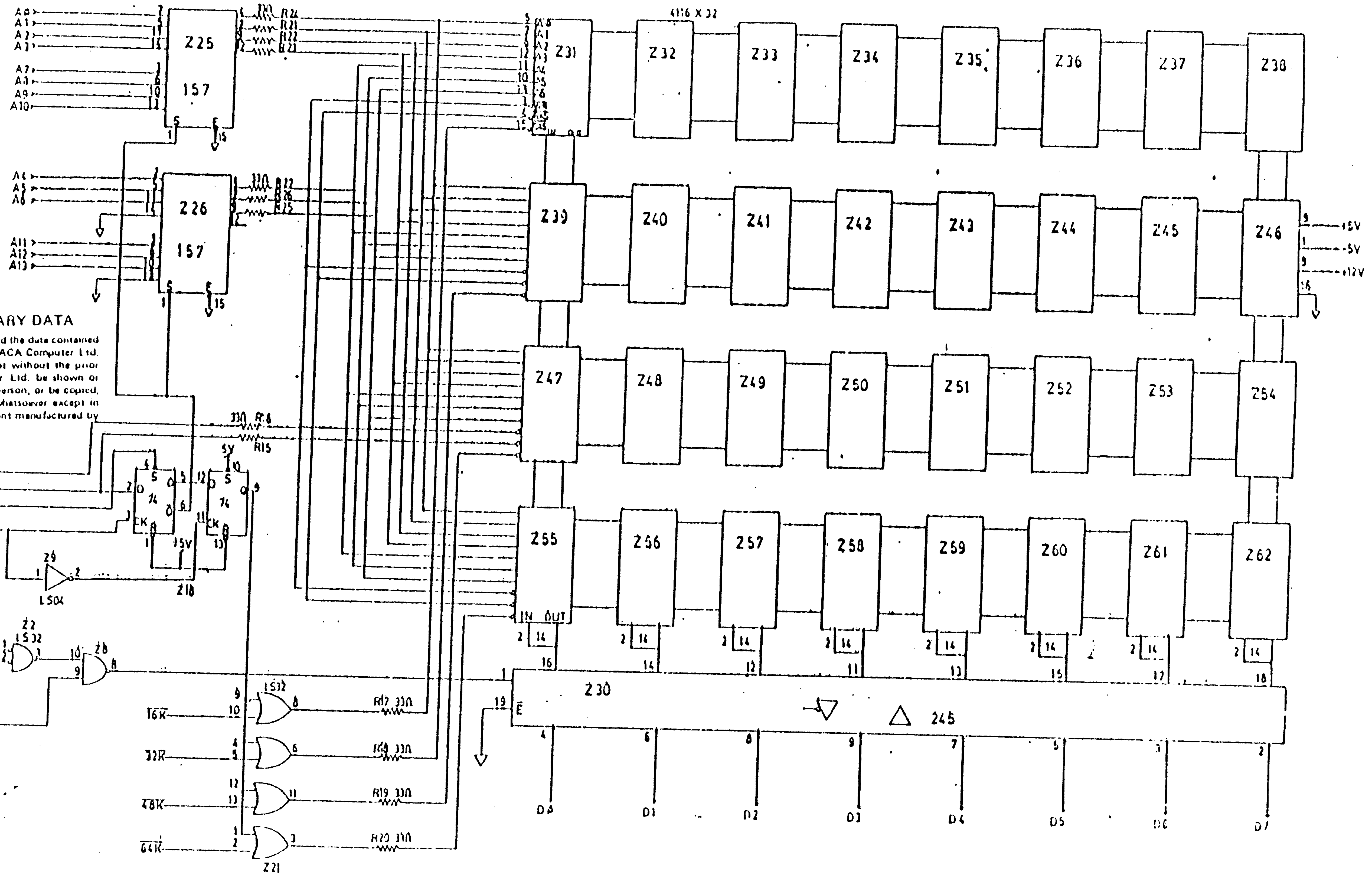
GENIE III CPU BOARD



CONFIDENTIAL PROPRIETARY DATA

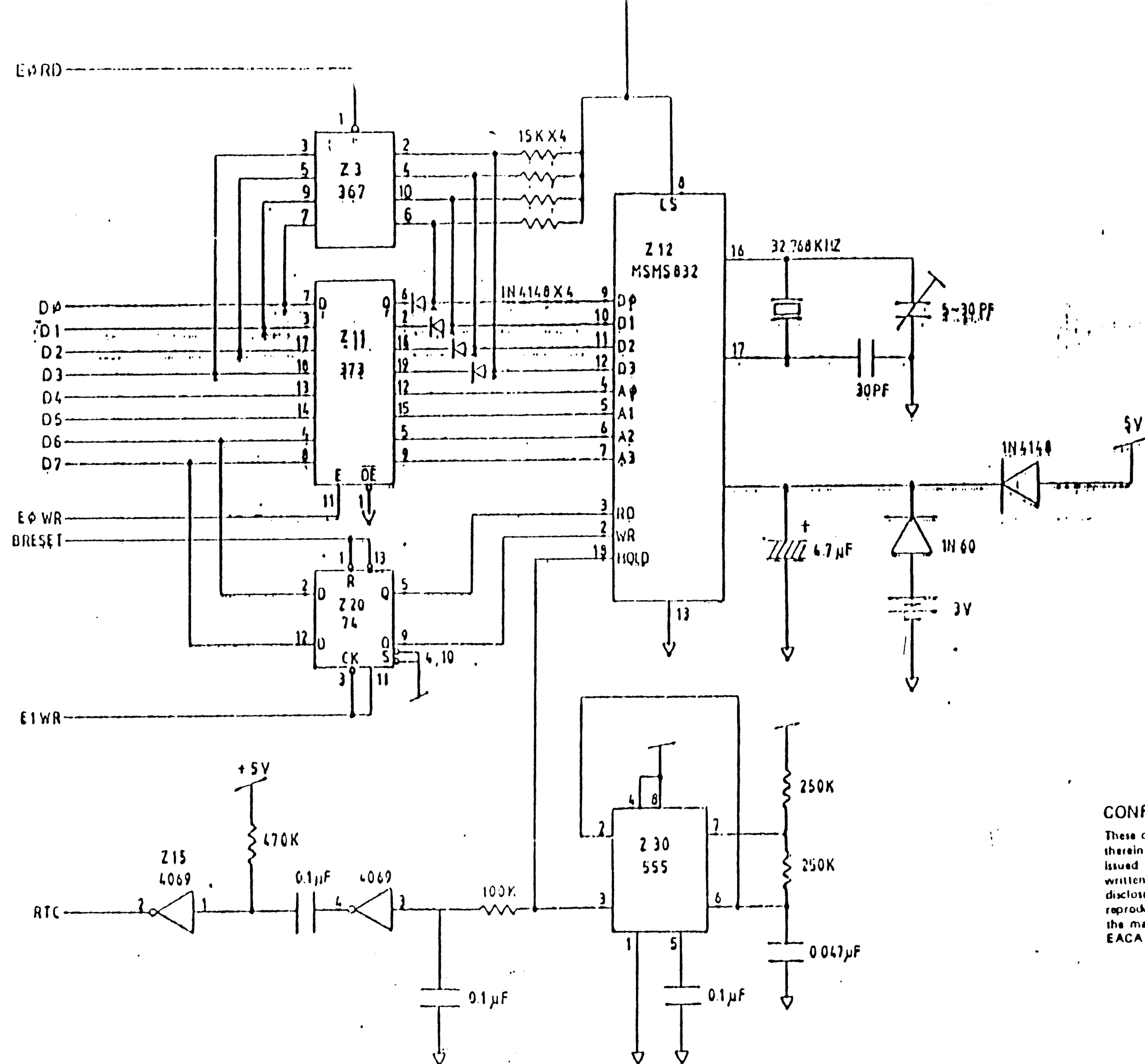
These drawings and/or specifications, and the data contained therein are the exclusive property of EACA Computer Ltd. Issued in strict confidence and shall not without the prior written permission of EACA Computer Ltd. be shown or disclosed in any manner to any other person, or be copied, reproduced or used for any purpose whatsoever except in the maintenance and repair of equipment manufactured by EACA Computer Ltd.

CPU BOARD SHEET 3



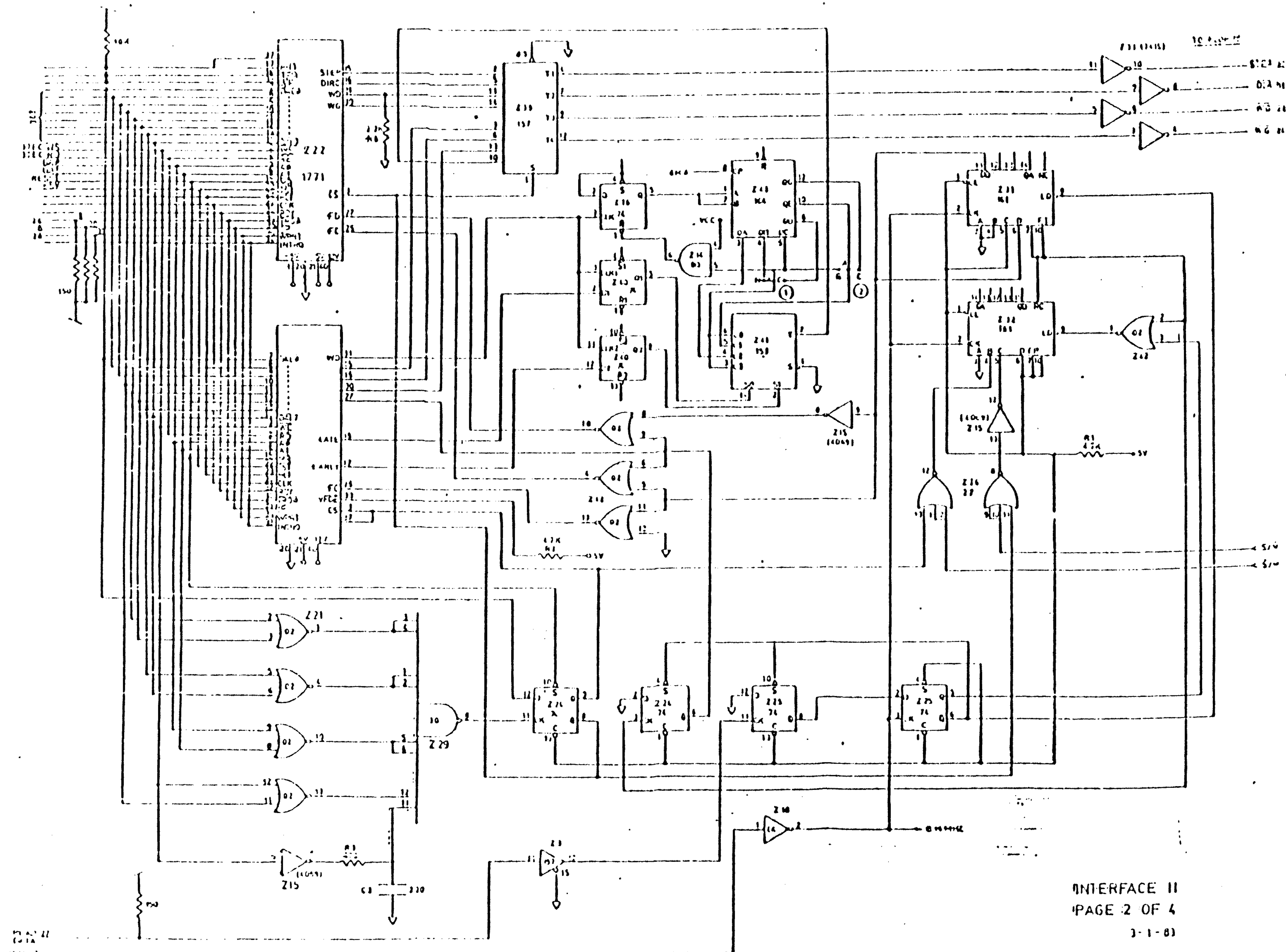
CONFIDENTIAL PROPRIETARY DATA

This document contains confidential and/or proprietary information, and the data contained herein is the exclusive property of EACA Computer Ltd. It is to be kept in strict confidence and shall not without the prior written permission of EACA Computer Ltd. be shown or in any manner to any other person, or be copied, reproduced or used for any purpose whatsoever except in connection with the maintenance and repair of equipment manufactured by EACA Computer Ltd.



CONFIDENTIAL PROPRIETARY DATA

These drawings and/or specifications, and the data contained therein are the exclusive property of EACA Computer Ltd. Issued in strict confidence and shall not without the prior written permission of EACA Computer Ltd. be shown or disclosed in any manner to any other person, or be copied, reproduced or used for any purpose whatsoever except in the maintenance and repair of equipment manufactured by EACA Computer Ltd.



CONFIDENTIAL PROPRIETARY DATA

These drawings and/or specifications, and the data contained therein are the exclusive property of EACA Computer Ltd. Issued in strict confidence and shall not without the prior written permission of EACA Computer Ltd. be shown or disclosed in any manner to any other person, or be copied, reproduced or used for any purpose whatsoever except in the maintenance and repair of equipment manufactured by EACA Computer Ltd.

INTERFACE II

PAGE 2 OF 4

3-1-83

